

# Canopy, Car Wash & Exterior C-Store LED Lighting



Install a Cree lighting solution in your canopy and c-store perimeter to get significantly increased lighting performance while reducing energy consumption and maintenance expenses.



## Canopy and Soffit Lighting

### CPY Series

#### SURFACE-MOUNT CANOPY LUMINAIRE

- Slim low profile design
- Flat or drop lenses available
- Easy, quick and reliable installation
- Suitable for single or double skin canopies
- Distribution optimized for canopy lighting applications
- Industry leading 10-yr limited warranty



### 304 Series™

#### RECESSED CANOPY LUMINAIRE

- BetaLED® Technology
- Integrated heat sink and motion sensor
- Can be configured to achieve 100+ lumens-per-watt performance
- Multiple mounting options
- Through-wiring capability



### 228 Series™

#### RECESSED CANOPY LUMINAIRE

- BetaLED® Technology
- 30-, 60- and 90-LED configurations
- Integrated heat sink and optional motion sensor
- Installs in 12-inch deck pans



## Car Wash, Site & Security Lighting

### Cree Edge™

#### SECURITY LUMINAIRE

- BetaLED® Technology
- Wall mount
- 20- to 120-LED configurations
- Low-profile, modular design



### Cree Edge™

#### AREA LUMINAIRE

- BetaLED® Technology
- Low-profile, modular design
- Energy-saving two-level options
- Optional backlight cutoff shield



### Cree Edge™

#### HIGH OUTPUT LUMINAIRE

- BetaLED® Technology
- Up to 65,000 lumen output
- 120 and 240 LED configurations
- Excellent color quality and consistency



### LEDway®

#### SITE LUMINAIRE

- BetaLED® Technology
- 20- to 120-LED configurations
- More than 20 optical distributions
- Flexible drive currents



# Interior C-Store Area & Promotional LED Lighting

Add the same savings and performance features inside with Cree interior LED solutions that add punch to your promotions with less energy.



## LED Linear

### CS Series

#### 1' X 4' / 1' X 8' LINEAR LUMINAIRE

Cree TrueWhite® Technology

MicroMixing™ Optics

90 CRI at 3500K or 4000K

100-120 LPW

0-10V Dimming to 5%



## Architectural Troffers

### CR Series

#### 2' X 2' / 2' X 4' / 1' X 4' TROFFERS

Cree TrueWhite® Technology

Estimated payback less than 1 year

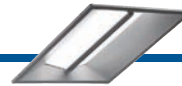
90 CRI at 3500K or 4000K

90-110 LPW efficacy

Step Dimming to 50%, 1-10V to 5%

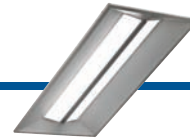
### CR22™

#### 2' X 2' TROFFER



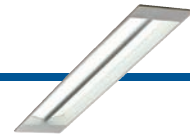
### CR24™

#### 2' X 4' TROFFER



### CR14™

#### 1' X 4' TROFFER



## LED Lamps

### LRP-38™

#### PAR LAMP

Cree TrueWhite® Technology

94 CRI at 2700K

Dimmable to 20%



## LED Downlighting

### LR6™

#### 6" DOWNLIGHT

Cree TrueWhite® Technology

90 CRI at 2700K or 3500K

Dimmable to 20%

Also, installs into existing 6" housings



### RC6

#### 6" RECESSED HOUSING

Accommodates Cree 120V 6" downlights

Use with LR6 and CR6

IC rated, airtight and protected

California Title-24 compliant\*

\*when ordered with a GU24 socket



### SC6

#### CYLINDRICAL HOUSING

Surface, Cord (CM) or Wall (WM) Mount

Accommodates Cree 277V 6" downlights

7-ft. suspension distance to top of fixture



# Cree IS LED Lighting.

Learn more at: [www.cree.com/lighting](http://www.cree.com/lighting) | [info@cree.com](mailto:info@cree.com) | 800.236.6800

© 2013 Cree, Inc. All rights reserved. For informational purposes only. Content is subject to change. Not a warranty or specification. See [www.cree.com/lighting](http://www.cree.com/lighting) for warranty and specifications. Cree®, the Cree logo, TrueWhite®, Cree TrueWhite®, and LEDway® are registered trademarks, and Cree EDGE™, 304 Series™, 228 Series™, LR6™, LRP-38™, CR22™, CR24™ and CR14™ are trademarks of Cree, Inc.

FG#CAT/SHT-CP001 04/2013

