

# Cree SmartCast Manager™

PC Application for Setup, Dashboard and Energy Analytics

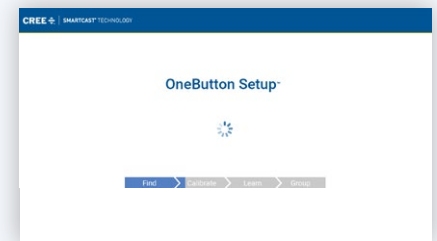
## Overview

The SmartCast Manager™ was created to maximize the energy savings of SmartCast® Power over Ethernet (PoE) technology and make its setup and management surprisingly simple and intuitive. It enables entire buildings to be set up with a single keystroke and it allows intuitively simple changes to the system and settings. It also facilitates real-time visibility into system status and advanced energy savings strategies including task tuning and energy savings visualization.



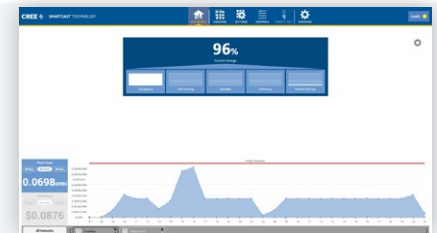
## Simple and Intuitive Setup

Cree technology breakthrough OneButton™ Setup enables setup of hundreds of devices at one time. It works with device firmware and utilizes visual light communication and intelligent algorithms to create logical occupancy and switch groups. This eliminates the painstaking and error-prone commissioning process of ordinary PoE lighting. Changes in settings and configuration are handled simply from a central location.



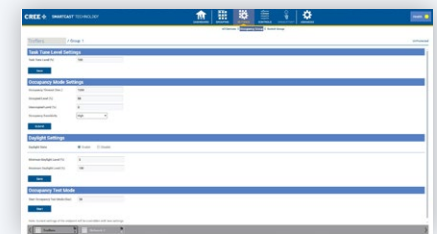
## Visualize Energy Savings with a Dashboard

An energy savings analytics dashboard allows you to visualize energy savings deployment-wide to uncover additional ways to save. You can also configure the application to collect historic energy savings data, then export that data for further trend analysis, measurement and verification.



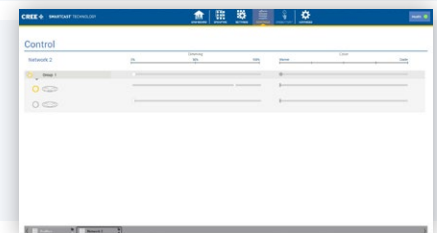
## Implement Advanced Energy Savings Methodologies

Deliver greater energy savings with aggressive control settings for occupancy detection, daylight harvesting and other energy reduction strategies. Implement task tuning to decrease maximum light levels available across all devices or in specific areas where lower light levels are desired. Select groups and devices for changes via the software interface or select in the space with the configuration tool.



## Control

Control local lighting settings from a central location. Turn lights on and off or dim them down or up. Change the color temperature of lights based on user preference or the season.



## Ordering Info

PRODUCT	DESCRIPTION
CSC-MGR	License for single installation. 12 months of software maintenance and upgrades included.

**Note:** Software is only operational when connected to SmartCast® PoE lighting VLAN.

### ONEBUTTON™ SETUP

- Initial setup with the push of a button. Hundreds of devices that are connected to a configured and compatible PoE switch.
- Automatically creates a lighting network with all devices and respective wall dimmers within your configured lighting VLAN.
- Utilizes visual light communication and platform algorithms to create logical groups.
- Automatic daylight calibration.
- OneButton™ Setup available by individual switch or selected devices.

**Note:** After setup, devices operate without SmartCast Manager. It isn't required after initial setup.

### SIMPLE GROUP AND SETTINGS CHANGES

- Simple and intuitive changes to switch groups and occupancy groups as requirements change.
- Selection of devices and groups designed to be simple and intuitive; possible methods of selection:
  - *Point Select* – Utilize SmartCast® PoE Selection Tool pointed at sensors on device to physically select in the space. CCT-CWC-1.
  - *Switch Groups* – Press and hold paddle on switch to select switch and/or switch group.
  - *Browse Select* – Select devices from logical groups in software. Identify feature flashes selected devices or groups to confirm selection.
- Switch groups are devices controlled by an assigned switch or switches.
- Occupancy groups are devices that turn on at the same time when a single device detects occupancy.
- Switch and occupancy groups may be configured to operate independently.
- Groups are given default names which may be customized by user (up to 15 characters).
- Settings changes may be made across entire network of devices, subsets of devices or individual devices.

### ADVANCED ENERGY SAVINGS METHODOLOGIES

- Task tuning by device, group, network or all
- Occupied level adjustment
- Unoccupied level adjustment
- Occupancy time out
- Energy savings visualization

### DASHBOARD

- Visualize energy savings
- Compared to default baseline of 100% output
- Percentage and dollar savings
- Savings by control methodology
- Baseline and cost of energy is adjustable
- Historical savings for time the application is running; Resets when restarted
- Data export through CSV file
- Platform and lighting network health status

### SUPPORTED SOFTWARE PLATFORMS

- Windows 7 Professional
- Windows 7 Enterprise
- Windows 8 Professional
- Windows 8 Enterprise
- Windows Server 2008 R2
- Windows Server 2012
- Windows Server 2012 R2
- Additional platforms TBD

Visit [lighting.cree.com/smartcast](http://lighting.cree.com/smartcast) or contact a Cree lighting representative to learn more.