

EJBCR

Expanded Junction Box for CR Series Troffers

Product Description

The CR Series Expanded Junction Box doubles the size of the standard J-Box and allows for easier wiring when doing through wire or using heavier gauges of wire.

Product Specifications

CONSTRUCTION & MATERIALS

- Galvanized steel 18 gauge
- Dimensions:** L 2.81" (71mm) x W 1.60" (40mm) x H 2.36" (60mm)

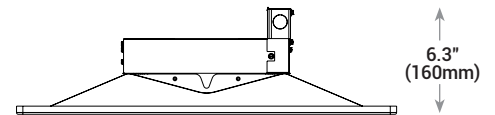
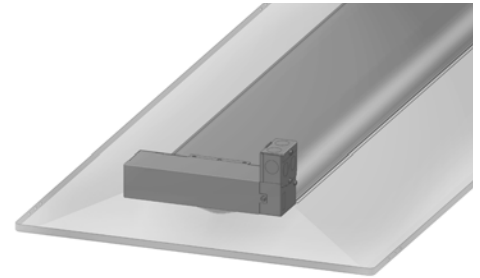
REGULATORY & VOLUNTARY QUALIFICATIONS

- UL Listed
- Suitable for wet locations
- Designed for indoor use

INSTALLATION

- Remove existing J-Box lid
- Install EJBCR over opening of existing J-Box
- Secure in place with enclosed screw
- Install existing J-Box lid on EJBCR

NOTE: Reference www.cree.com/lighting for detailed installation instructions



NOTE: Use of Expanded Junction Box accessory will increase the depth of the troffer to 6.3" (160mm)

Ordering Information

Example: EJBCR 5PK

EJBCR-5PK
Product
EJBCR-5PK - Sold in packs of 5 - Not for use with Cree SmartCast™ Technology